

STATE OF FLORIDA
COUNTY OF PALM BEACH

THIS PLAT WAS FILED FOR
RECORD AT _____
THIS _____ DAY OF _____
2007 AND DULY RECORDED
IN PLAT BOOK _____ ON PAGES
_____ AND _____
SHARON BOCK, CLERK &
COMPTROLLER

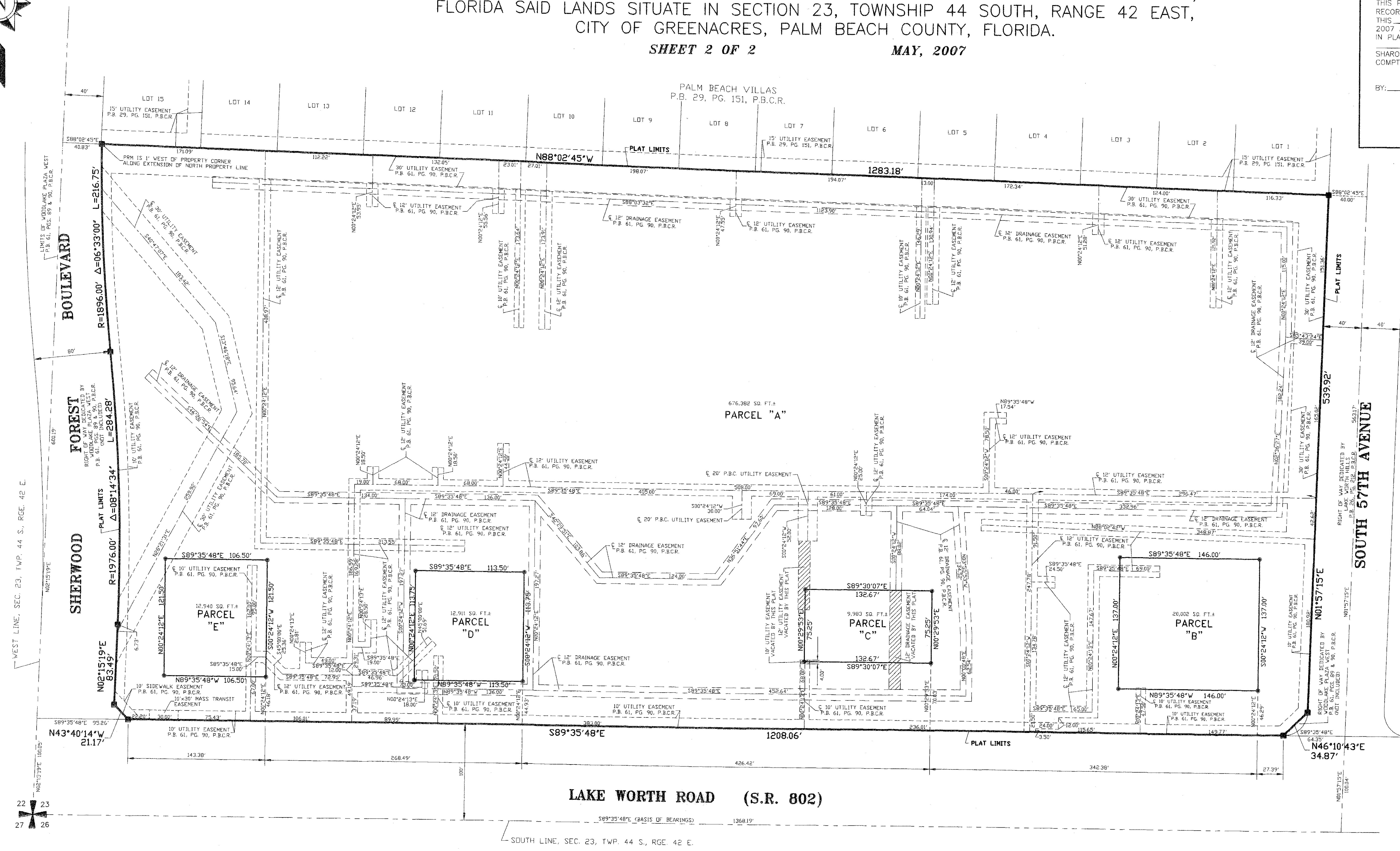
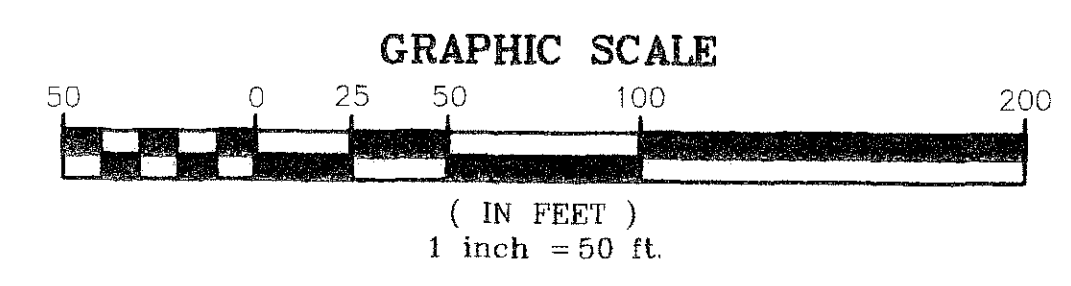
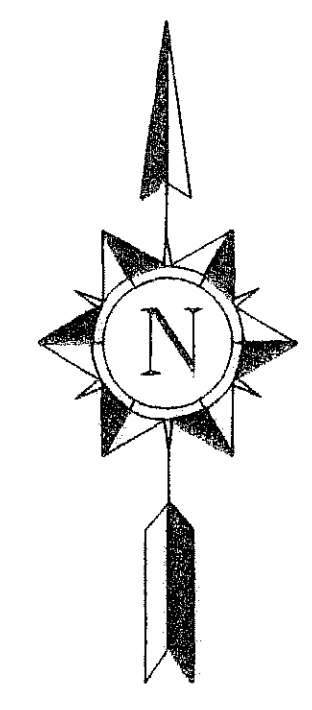
BY: _____

WOODLAKE PLAZA WEST REPLAT

BEING A REPLAT OF A PORTION OF WOODLAKE PLAZA WEST, AS RECORDED IN PLAT
BOOK 61 ON PAGES 89 AND 90 OF THE PUBLIC RECORDS OF PALM BEACH COUNTY,
FLORIDA SAID LANDS SITUATE IN SECTION 23, TOWNSHIP 44 SOUTH, RANGE 42 EAST,
CITY OF GREENACRES, PALM BEACH COUNTY, FLORIDA.

SHEET 2 OF 2

MAY, 2007



NOTES:

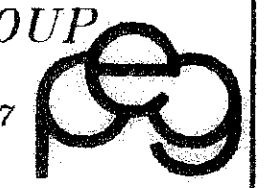
- NOTICE:
 - THIS PLAT, AS RECORDED IN ITS GRAPHIC FORM, IS THE OFFICIAL DEPICTION OF THE SUBDIVIDED LANDS DESCRIBED HEREIN AND WILL IN NO CIRCUMSTANCES BE SUPPLANTED IN AUTHORITY BY ANY OTHER GRAPHIC OR DIGITAL FORM OF THE PLAT.
 - THERE MAY BE ADDITIONAL RESTRICTIONS THAT ARE NOT RECORDED ON THIS PLAT THAT MAY BE FOUND IN THE PUBLIC RECORDS OF THIS COUNTY.
- THE BEARINGS SHOWN HEREON ARE RELATIVE TO THE BEARING S89°35'48"E ASSUMED FOR THE SOUTH LINE OF SECTION 23, TOWNSHIP 44 SOUTH, RANGE 42 EAST.

LEGEND

- PERMANENT REFERENCE MONUMENT (P.R.M.)
- PERMANENT CONTROL POINT (P.C.P.)
- P.B.C.R. PALM BEACH COUNTY RECORDS
- P.B. PLAT BOOK
- PG. PAGE
- R/W RIGHT OF WAY
- O.R.B. OFFICIAL RECORDS BOOK
- S.R. STATE ROAD
- SEC. SECTION
- TWP. TOWNSHIP
- RNG. RANGE
- SQ. FT. SQUARE FEET

This instrument was prepared by Michael F. Sperr for Paramount Engineering Group, Inc.

PARAMOUNT ENGINEERING GROUP
ENGINEERS, ARCHITECTS, PLANNERS, SURVEYORS
5700 N. Federal Hwy., Suite 2, Boca Raton, FL 33487
TELEPHONE: (561) 989-2280 - FAX: (561) 989-2284



DRAWN: M.S.	DATE: 09-08-06	CHECKED BY: M.F.S.	SHEET: 2 OF 2
----------------	-------------------	-----------------------	------------------